



## **Wet & Dry Body Trimmer Kit**



### **USE AND CARE GUIDE**

(For model: CPG1-5000)

Manufactured under exclusive license of Perio Inc.©Pure Silk

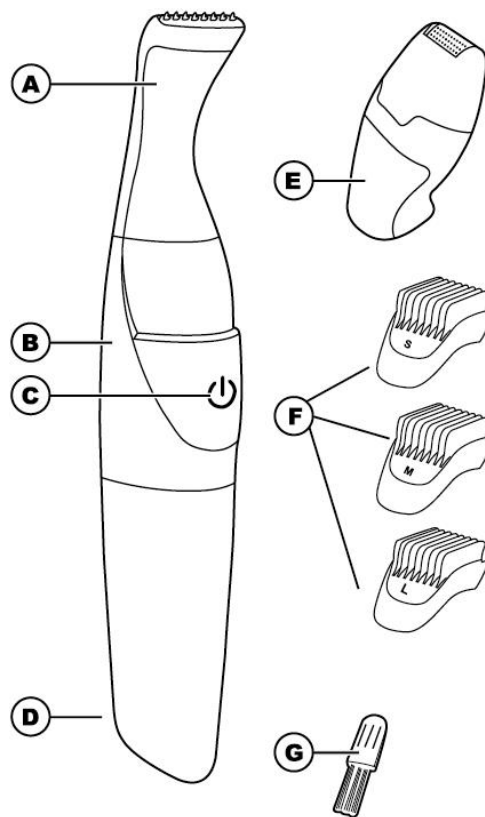
**PLEASE RETAIN THIS USE & CARE GUIDE FOR FUTURE REFERENCE**

**WARNING/IMPORTANT**

1. Read the USE & CARE GUIDE thoroughly before using the device.
2. Use the appliance only for purposes described in this instruction book.
3. For the hygienic reason, the appliance should not be shared with others.
4. This appliance is not intended for use by persons (including children) with reduced physical sensory or mental capabilities, or lack of experience and knowledge.
5. Regularly check the blade and foil condition, if signs of damage are visible, do not use.
6. Do not use if skin is red, irritated, inflamed, infected or blistered.
7. Foils and blades will wear over time and may require replacing.
8. This product is for household use only.
9. Do not place or store your unit in direct sunlight. Store only in a cool dry place.
10. Keep your unit out of reach of children.

**A QUICK LOOK AT YOUR PRODUCT**

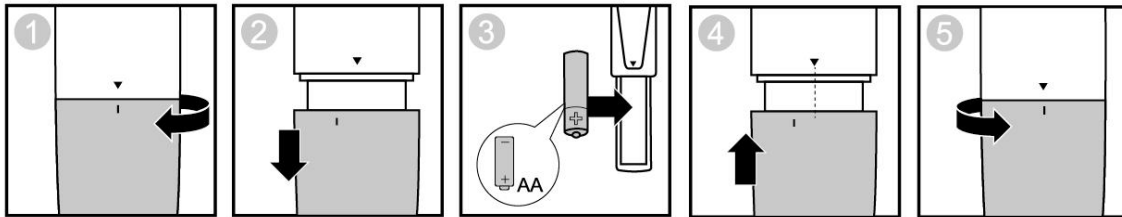
- A. Hair Trimmer Head
- B. Body
- C. On/Off Switch
- D. Battery Cover
- E. Foil Shave Head
- F. S/M/L Guiding Combs
- G. Cleaning Brush



## BATTERY REPLACEMENT

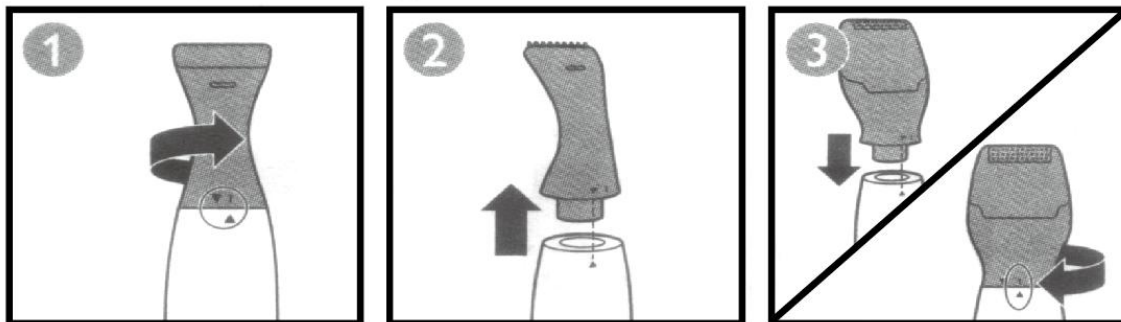
This appliance is designed for use with 1XAA battery (1.5V, not included). If the shaver motor slows down in operation or becomes less efficient, replace the battery. Before begin to use, please follow the instructions below:

1. Twist the battery cover in clockwise direction.
2. Pull the battery cover away from the body, exposing the battery compartment.
3. Insert an AA battery into the battery compartment, with the positive (+) terminal first.
4. Place the battery cover back onto the body.
5. Twist until the arrow of the battery cover aligns with the I on the body.



## HOW TO USE

1. Choose one of the two included heads onto the body, depending on what you wish to do, follow below images to replace the heads.



- a. To trim hair short, please use the angled trimmer head.
  - b. To shave hair off completely, use the foil shave head.
2. Switch on by pushing the on/off switch.
  3. Hold the appliance at a right angle to your skin.
  4. Glide your trimmer across your skin, against the direction of the hair growth. Use your other hand to keep the skin stretched and taut for best results.
  5. Applying excessive pressure will not result in a closer shave and may cause irritation or skin damage.
  6. If you wish to use the attached guiding combs, please place it on top of the angled trimmer head, making sure the clips on the side of the comb are fully engaged on the head of the trimmer.

## **CLEANING AND CARE**

1. To maintain your appliance, carefully clean the head each time after use.
2. Use the enclosed cleaning brush to remove all of the hairs that have collected in the cutting head. Rinse cutting head off under running tap water if necessary.
3. Put the cutting head back onto the shaver so that it clips correctly.
4. Wipe off any moisture from the appliance with a soft dry cloth
5. DO NOT use abrasive liquids or detergents.

## **INFORMATION ON WASTE DISPOSAL FOR CONSUMERS OF ELECTRICAL & ELECTRONIC EQUIPMENT**

This mark on a product and/or accompanying documents indicates that when it is to be disposed of, it must be treated as Waste Electrical & Electronic Equipment (WEEE). Any WEEE marked waste products must not be mixed with general household waste, but kept separate for treatment, recovery and recycling of the material used.

For proper treatment, recovery and recycling: please take all WEEE marked waste to your local recycle center.



# 2 Year Limited Warranty

Questions: call toll-free at 877- 536-8766

Email Support: [customerservice@xtremecables.com](mailto:customerservice@xtremecables.com)

This product is covered under warranty for a period of 2 years from the purchase date. Improper use or failure to follow operation and instruction guide will void this warranty. Do not return to the store. Please send a proof of purchase, return label with your name and address, along with a check for \$4.95 to cover S/H. Please allow 6-8 weeks to process your return.

Make check payable to Xtreme Personal Care, Inc.

Clip & Return to:

Xtreme Personal Care

32 Brunswick Ave.

Edison NJ 08817

Att: Customer Service

Customer Name \_\_\_\_\_

Return Address \_\_\_\_\_

Date Purchased \_\_\_\_\_

Store \_\_\_\_\_

Brief Description of Issue \_\_\_\_\_